

Frequency Expansion Information

CONFIDENTIAL

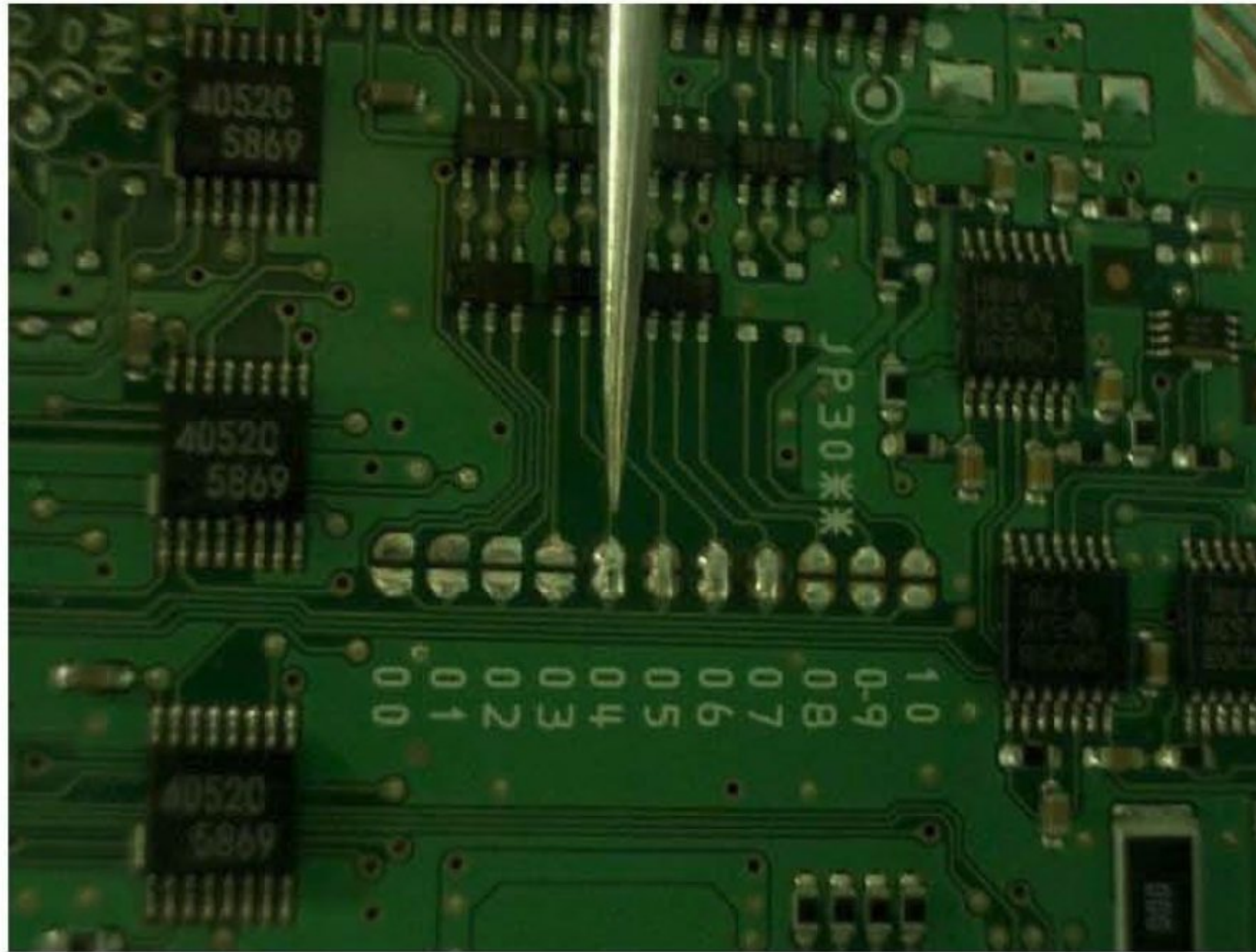
MODEL: FT-2000	DATE: 19 SEPTEMBER 2006
ORIGINAL TX FREQ. RANGE: 160-6M AMATEUR BANDS	NEW TX FREQ. RANGE: 1.8 – 30, 50-54 MHz

Important Notice

This information is solely for use by licensed members of MARS (Military Affiliate Radio System) or CAP (Civil Air Patrol), and release to any other party is not authorized. Use of any Amateur Radio product outside of the Amateur band is at the users own risk, and no guarantee of compliance with specifications outside the Amateur bands is expressed or implied. The Limited Warranty does not cover damage caused by any attempt to modify an apparatus for out-of-Amateur-band operation, nor does the Limited Warranty cover damage to components that may result from out-of-Amateur-band use.

Modification Procedure:

On the Control Unit, place a solder bridge across the pads at JP3004, expanded transmission will be engaged. See the images below for location details.



Make a note of all your Menu settings, so you can re-load them quickly, then do a hard CPU reset in order to save the new frequency range. To do this, turn the transceiver off, then press and hold in the [FAST] and [LOCK] keys; hold them in while turning the radio back on. When the radio comes on, you may release these two keys.